

GM-CSF (Granulocyte-macrophage colony-stimulating factor), Human

Cat.no.	Product size
RA-FD701	20μg
RA-FD702	100μg

Storage: Lyophilized protein should be stored at -20°C. Upon reconstitution, protein aliquots should be stored at -20°C or -80°C. The protein was lyophilized from a solution containing 1XPBS, pH 8.0. Please use finished within one month after protein reconstitution.

Sequence:

MAPARSPSPSTQPWEHVNAIQEARRLLNLSRDTAAEMNETVEISEMFDLQEPTCLQTRLELYKQGLRGSCLKKGPL
TMMASHYKQHCPPTPETSCATQIITFESFKENLKDFLLVIPFDCWEPVQE with polyhistidine tag at the
N-terminus

Source: Escherichia coli

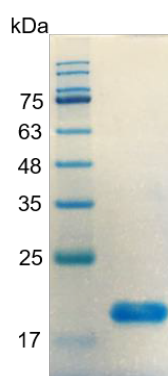
Purity: >98% as determined by SDS-PAGE. Ni-NTA chromatography

Endotoxin Test: <0.1 EU/μg by LAL method

Bioactivity (ED50): 0.3165 ng/mL measured by its ability to induce TF-1 cells proliferation

Suggested application: It is recommended to reconstitute the lyophilized protein in sterile H₂O to a concentration not less than 100 μg/mL and incubate the stock solution for at least 20 min to ensure sufficient re-dissolved.

SDS-PAGE analysis of recombinant human GM-CSF



The product is for research only, not for diagnostic and clinical use.