

GIF (Gastric Intrinsic Factor), Human

Cat.no.	Product size
RA-FF501	50µg
RA-FF502	100µg

Storage: Lyophilized protein should be stored at -20°C. Upon reconstitution, protein aliquots should be stored at -20°C or -80°C. The protein was lyophilized from a solution containing 1XPBS, pH 8.0. Please use finished within one month after protein reconstitution.

Sequence:

MAWFALYLLSLLWATAGTSTQTQSSCSVPSAQEPLVNGIQVLMENSVTSSAYPNPSILIAMNLAGAYNLKAQKLLTYQL
MSSDNNDLTIGQLGLTIMALTSSCRDPGDKVSILQRQMENWAPSSPNAEASAFYGPSLAILALCQKNSATLPIAVRFA
KTLANSSPFNVDTGAMATLALTCMYNKIPVGSEEGYRSFLGQVLKDIVEKISMKIKDNGIIGDIYSTGLAMQALSVTP
EPSKKEWNCKKTTDMILNEIKQGKFHNPMISIAQILPSLKGKTYLDVPQVTCSPDHEVQPTLPSNPGPGPTSASNITVIY
TINNQLRGVELLFNETINVSVKSGSVLLVLEEAQRKNPMFKFETMTSWGLVSSINNIAENVNHKTYWQFLSGVTP
LNEGVADYIPFNHEHITANFTQY with polyhistidine tag at the C-terminus

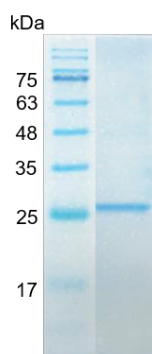
Source: Escherichia coli

Purity: >98% as determined by SDS-PAGE. Ni-NTA chromatography

Endotoxin Test: <0.1 EU/µg by LAL method

Suggested application: It is recommended to reconstitute the lyophilized protein in sterile H₂O to a concentration not less than 100 µg/mL and incubate the stock solution for at least 20 min to ensure sufficient re-dissolved.

SDS-PAGE analysis of recombinant human GIF



The product is for research only, not for diagnostic and clinical use.